



30% Design Community Meeting

Dr. Phillips ES
Functional Equity
Classroom Addition

April 5, 2023

Please sign in on your mobile device:
<https://communitymeeting.ocps.net/>



***Welcome Message from
School Board Member District 4
Pam Gould***

***Introductions by
Facilities Director, Construction Planning
Jessma Lambert***

CAMPUS AERIAL

PROJECT DATA

Current Enrollment: 757 students

Current school capacity: 660 stations

Target Student Stations with Addition: 837
(177 Additional Stations)

Current Parking:
108 Spaces

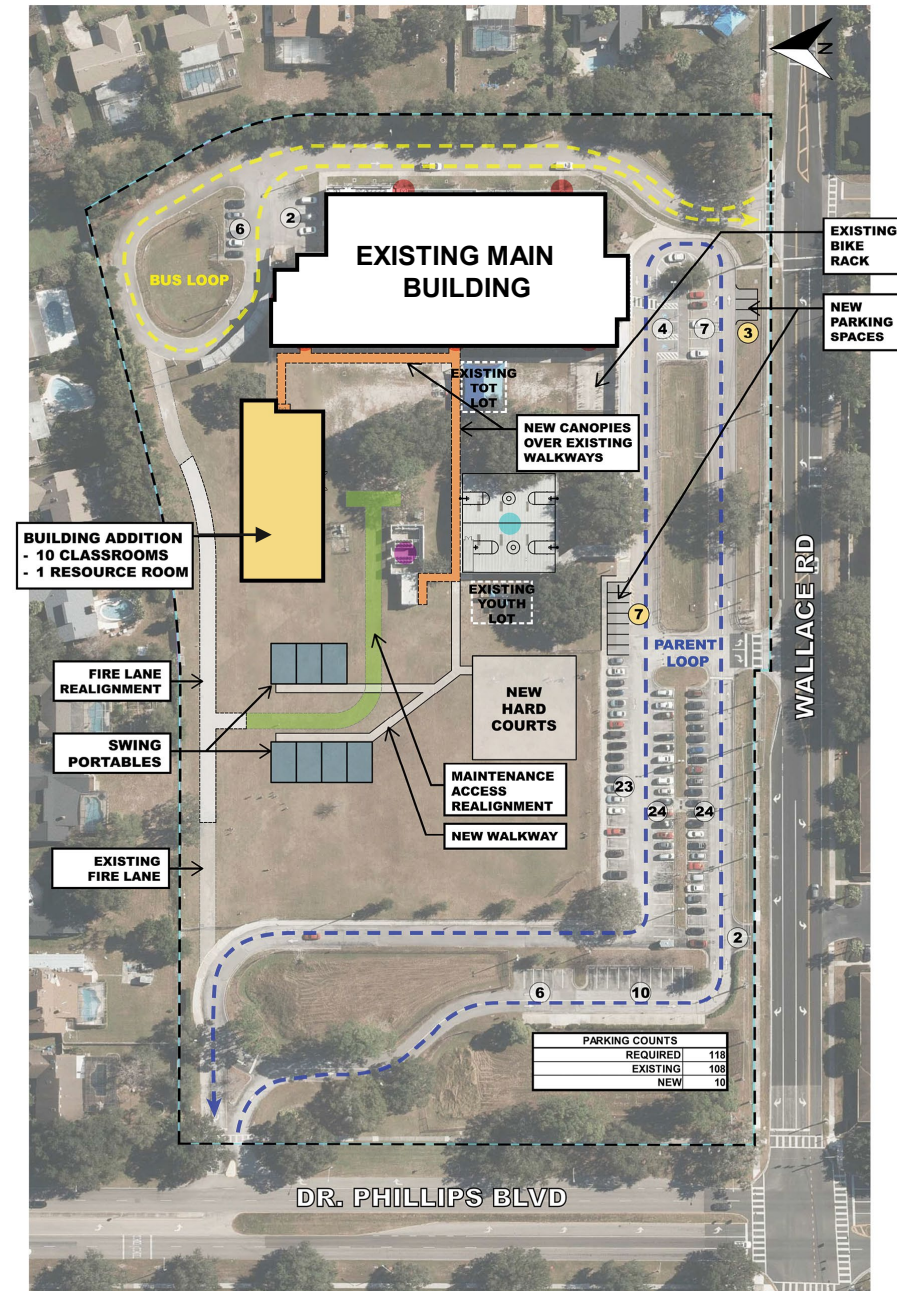
Site Area:
12 Acres



GROUND

PROPOSED SCOPE OF WORK

- Building Addition
- Additional parking spaces (10)
- Provide additional covered walks to connect to addition, courts, & play lots
- Provide new hard courts
- Re-shape existing retention pond to accommodate addition
- Portable-free campus



BUILDING ADDITION

PROPOSED SCOPE OF WORK

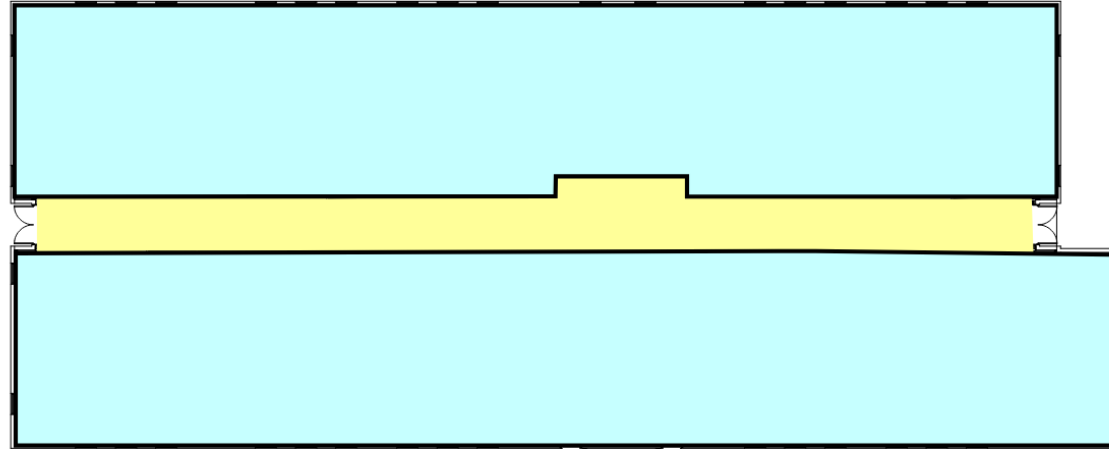
1 Story Addition

Program:

10 Classrooms / 1 Resource Room (177 student stations)

Area:

12,028 Gross SF



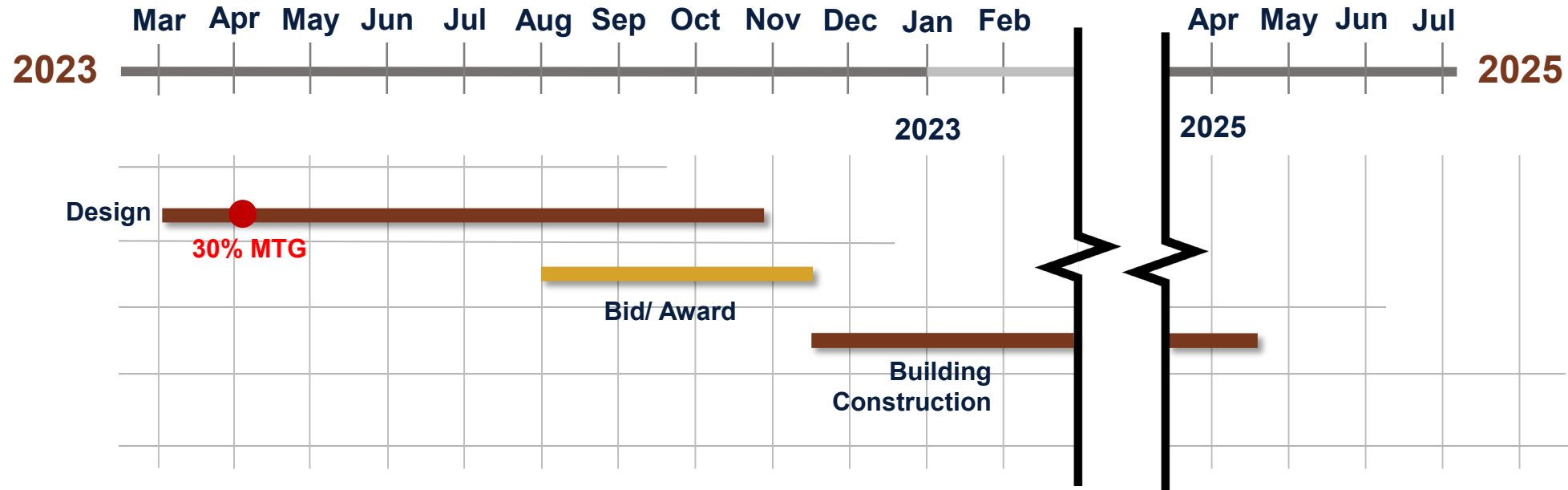
BUILDING SYSTEMS

PROPOSED SCOPE OF WORK

- Additional air-cooled chiller to accommodate building addition
- Fire alarm system upgrades
- Upgrade security & intercom systems
- Scope for existing building is Capital Renewal



Design & Construction Schedule



Thought Exchange

Thought Exchange

- OCPS is using a new tool called ThoughtExchange to gather input from students and staff and school community.
- Students, staff and parents are asked to answer one open-ended question with as many responses, and then moved onto the Rate Thoughts step.
- In the Rate step, they saw their responses and those shared by others and assigned 1 to 5 stars to each idea depending on how strongly they agreed or disagreed with it.

ThoughtExchange includes three steps:

1. **Share**: Respond to the question, independently and anonymously
2. **Star**: Consider thoughts shared and rate them on a five-star scale.
3. **Discover**: Learn what matters to the group by exploring thoughts and ratings.

Exchange Summary

Question:

Considering our plan for a classroom addition at your school, what is one thing about our plan that should be changed as we proceed with the design?

Questions & Answers

We want to hear from you.

Click here to give us your thoughts regarding your new school.

<https://tejoin.com/scroll/400695789>



This Community Meeting Presentation is posted
at facilities.ocps.net and on the School Board Member's page.

Our Promise. Your Support. Their Success.

Our Promise. Your Support. Their Success.

Our Promise. Your Support. Their Success.

Thank You



**Orange County
Public Schools**